



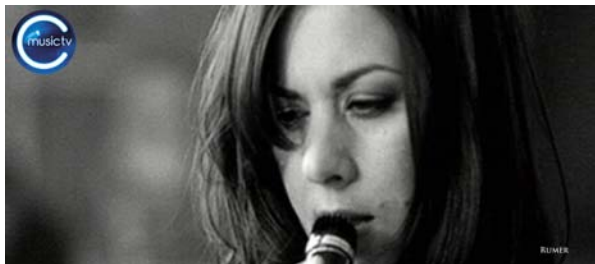
## C MUSIC TV –JANUARY 2011 VIDEO HIGHLIGHTS

### ERIC WHITACRE'S VIRTUAL CHOIR 'LUX AURUMQUE'



Accomplished composer, conductor & lecturer, Eric Whitacre has gained huge worldwide popularity in recent years. Many of his works have entered the standard choral & symphonic repertoires & as a conductor he has appeared with countless ensembles throughout the world. His virtual choir project has brought together hundreds of singers globally as seen in this video of the recording for 'Lux Aurumque'.

### RUMER 'ARETHA'



Rumer is the professional name of the British female singer-songwriter, Sarah Joyce. Critics have said her voice is reminiscent of Karen Carpenter & apparently when Rumer was discovered by Burt Bacharach, he paid for her flight to California so he could hear her sing. 'Aretha' is a biographical song which refers to the influence of Aretha Franklin's music on Rumer when she was growing up.

### TRON : LEGACY



Tron:Legacy (Walt Disney pictures) is a sequel to sci-fi movie Tron originally released in 1982 starring Jeff Bridges. The plot centres around Sam Flynn, a boy haunted by the strange disappearance of his dad who was the founder of software corporation ENCOM & who has been trapped in the digital world for 20 years. He ventures into a highly advanced digital

world with cutting edge vehicles, weapons & landscape. This is a high-octane film packed with 3D special effects featuring French electronic music duo Daft Punk on the soundtrack.

### **SUSAN BOYLE 'PERFECT DAY'**



Crossover artist Susan Boyle rose to international fame on the reality TV show 'Britain's Got Talent'. Her surprisingly soft & beautiful voice stunned audiences & has since earned her a record deal with Simon Cowell's label 'Syco' further propelling her into the limelight. This beautifully shot video is her cover of Lou Reed's classic hit song 'Perfect Day' taken from her 2010 album 'The Gift'.

### **BRANKA PARLIC**



Branka Parlic is a professor & long-time chief advocate of minimalist & avant-garde music in Serbia. She has performed in Serbia, Croatia, Slovenia, Germany, France, Austria, Macedonia, Hungary, Switzerland in the past two years, playing pieces by Erik Satie, Philip Glass, Michael Nyman, Arvo Pärt, Wim Mertens, John Cage & many more. In this video she plays 'Opening' from Philip Glass' hauntingly beautiful 'Glassworks'.

### **CLOSE UP: XUEFEI YANG**



Xuefei Yang is a Chinese classical guitarist who has received critical acclaim for her delicate & expressive guitar playing. In this fascinating Close Up Xuefei explains what it was like growing up during the cultural revolution in China when the guitar was not considered a 'good' or 'worthy' instrument & how she achieved her dream of becoming a professional guitar player in the face of adversity.

Now signed to EMI, Xuefei has released several albums featuring some of the most well known & loved classical guitar repertoire. She talks exclusively to C Music TV about the recording of 'Concierto de Aranjuez', her influences, passions & ambitions she has yet to fulfil.